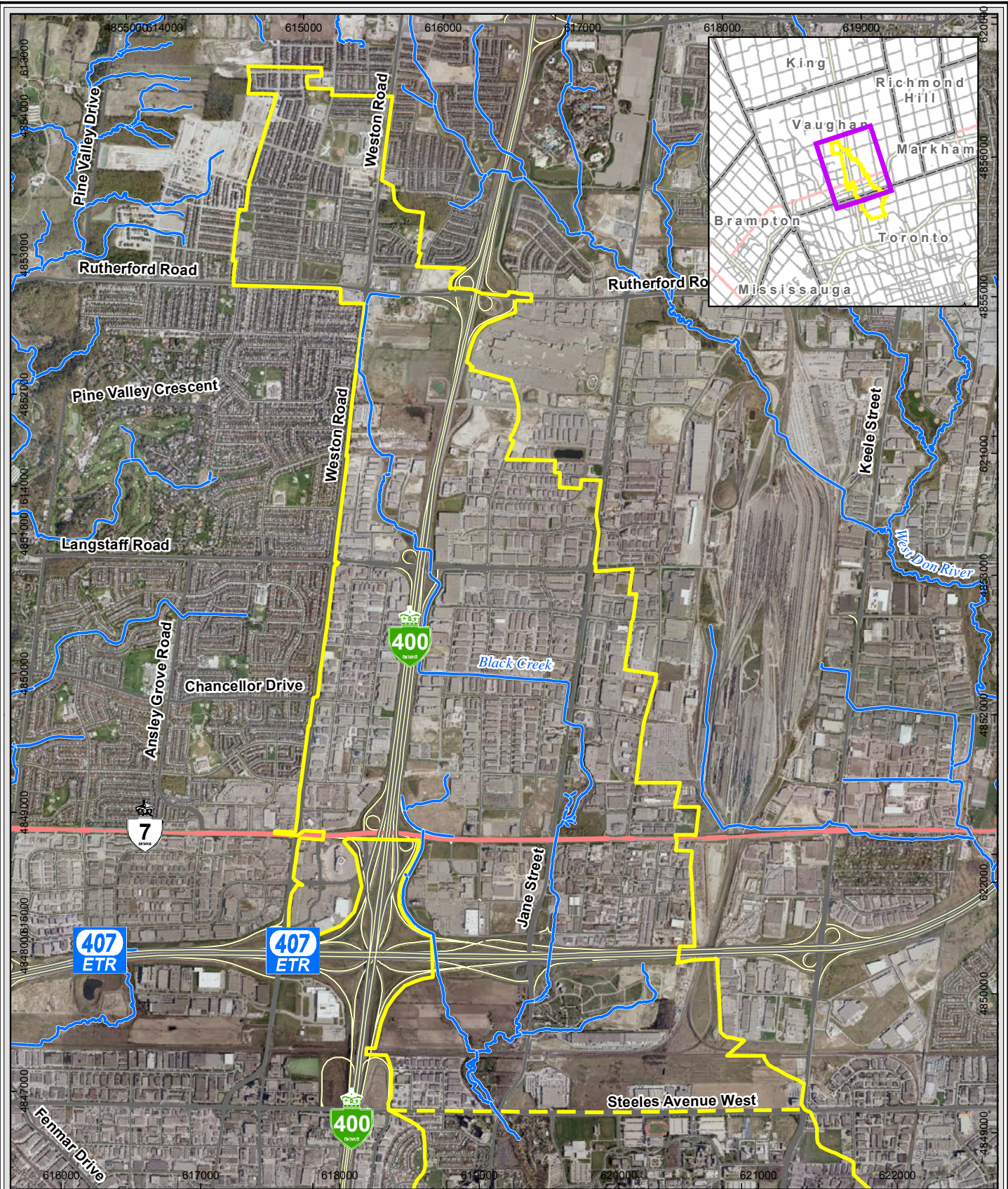
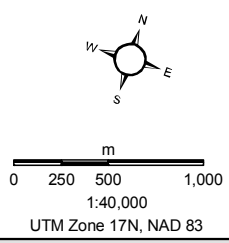


Figures



Map Document: (N:\projects\2009\900572\009\Final\GIS\spatial\MXDs\Report\MXD\900572\StudyArea.mxd) 1/27/2011 - 2:26:15 PM

Basemapping from Ontario Ministry of Natural Resources
Orthophotography: 2007





- Legend**
- Subwatershed Boundary
 - Watercourse

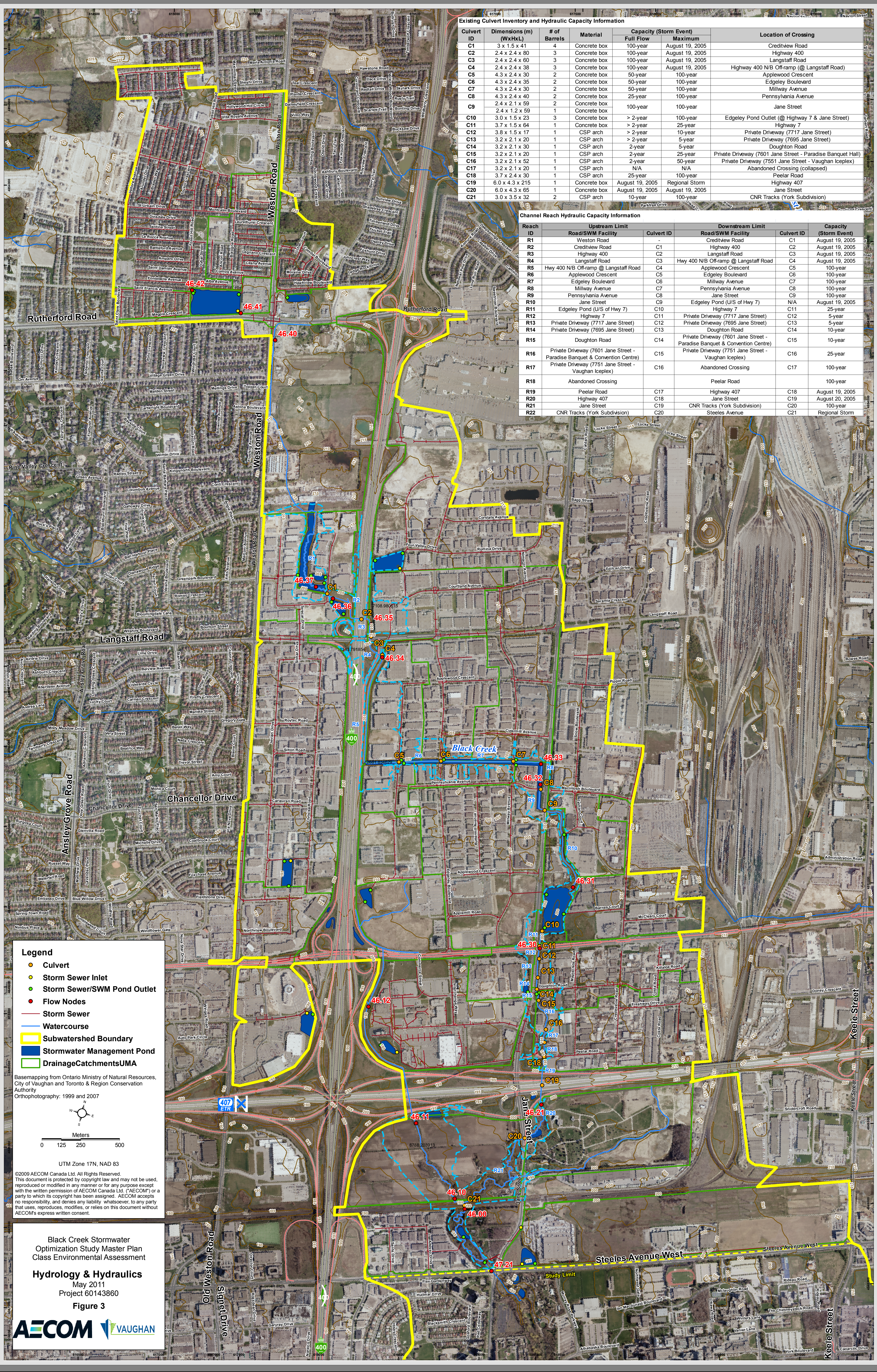
Black Creek Stormwater
Optimization Study Master Plan
Class Environmental Assessment

Study Area

January 2011
Project 60143860

Figure 2



Existing Culvert Inventory and Hydraulic Capacity Information

Culvert ID	Dimensions (m) (WxHxL)	# of Barrels	Material	Capacity (Storm Event)		Location of Crossing
				Full Flow	Maximum	
C1	3 x 1.5 x 41	4	Concrete box	100-year	August 19, 2005	Creditview Road
C2	2.4 x 2.4 x 80	3	Concrete box	100-year	August 19, 2005	Highway 400
C3	2.4 x 2.4 x 60	3	Concrete box	100-year	August 19, 2005	Langstaff Road
C4	2.4 x 2.4 x 38	3	Concrete box	100-year	August 19, 2005	Highway 400 N/B Off-ramp (@ Langstaff Road)
C5	4.3 x 2.4 x 30	2	Concrete box	50-year	100-year	Applewood Crescent
C6	4.3 x 2.4 x 35	2	Concrete box	50-year	100-year	Edgeley Boulevard
C7	4.3 x 2.4 x 30	2	Concrete box	50-year	100-year	Millway Avenue
C8	4.3 x 2.4 x 40	2	Concrete box	25-year	100-year	Pennsylvania Avenue
C9	2.4 x 2.1 x 59	2	Concrete box	100-year	100-year	Jane Street
C10	3.0 x 1.5 x 23	3	Concrete box	> 2-year	100-year	Edgeley Pond Outlet (@ Highway 7 & Jane Street)
C11	3.7 x 1.5 x 64	1	Concrete box	> 2-year	25-year	Highway 7
C12	3.8 x 1.5 x 17	1	CSP arch	> 2-year	10-year	Private Driveway (7717 Jane Street)
C13	3.2 x 2.1 x 20	1	CSP arch	> 2-year	5-year	Private Driveway (7695 Jane Street)
C14	3.2 x 2.1 x 30	1	CSP arch	2-year	5-year	Doughton Road
C15	3.2 x 2.1 x 20	1	CSP arch	2-year	25-year	Private Driveway (7601 Jane Street - Paradise Banquet Hall)
C16	3.2 x 2.1 x 52	1	CSP arch	2-year	50-year	Private Driveway (7551 Jane Street - Vaughan Iceplex)
C17	3.2 x 2.1 x 20	1	CSP arch	N/A	N/A	Abandoned Crossing (collapsed)
C18	3.7 x 2.4 x 30	1	CSP arch	25-year	100-year	Peel Road
C19	6.0 x 4.3 x 215	1	Concrete box	August 19, 2005	Regional Storm	Highway 407
C20	6.0 x 4.3 x 65	1	Concrete box	August 19, 2005	August 19, 2005	Jane Street
C21	3.0 x 3.5 x 32	2	CSP arch	10-year	100-year	CNR Tracks (York Subdivision)

Channel Reach Hydraulic Capacity Information

Reach ID	Upstream Limit		Downstream Limit		Capacity (Storm Event)
	Road/SWM Facility	Culvert ID	Road/SWM Facility	Culvert ID	
R1	Weston Road	C1	Creditview Road	C1	August 19, 2005
R2	Creditview Road	C1	Highway 400	C2	August 19, 2005
R3	Highway 400	C2	Langstaff Road	C3	August 19, 2005
R4	Langstaff Road	C3	Hwy 400 N/B Off-ramp @ Langstaff Road	C4	August 19, 2005
R5	Hwy 400 N/B Off-ramp @ Langstaff Road	C4	Applewood Crescent	C5	100-year
R6	Applewood Crescent	C5	Edgeley Boulevard	C6	100-year
R7	Edgeley Boulevard	C6	Millway Avenue	C7	100-year
R8	Millway Avenue	C7	Pennsylvania Avenue	C8	100-year
R9	Pennsylvania Avenue	C8	Jane Street	C9	100-year
R10	Jane Street	C9	Edgeley Pond (U/S of Hwy 7)	N/A	August 19, 2005
R11	Edgeley Pond (U/S of Hwy 7)	C10	Highway 7	C11	25-year
R12	Highway 7	C11	Private Driveway (7717 Jane Street)	C12	5-year
R13	Private Driveway (7717 Jane Street)	C12	Private Driveway (7695 Jane Street)	C13	5-year
R14	Private Driveway (7695 Jane Street)	C13	Doughton Road	C14	10-year
R15	Doughton Road	C14	Private Driveway (7601 Jane Street - Paradise Banquet & Convention Centre)	C15	10-year
R16	Private Driveway (7601 Jane Street - Paradise Banquet & Convention Centre)	C15	Private Driveway (7751 Jane Street - Vaughan Iceplex)	C16	25-year
R17	Private Driveway (7751 Jane Street - Vaughan Iceplex)	C16	Abandoned Crossing	C17	100-year
R18	Abandoned Crossing	C17	Peel Road	C18	100-year
R19	Peel Road	C18	Highway 407	C19	August 19, 2005
R20	Highway 407	C19	Jane Street	C20	August 20, 2005
R21	Jane Street	C20	CNR Tracks (York Subdivision)	C21	100-year
R22	CNR Tracks (York Subdivision)	C21	Steeles Avenue	C21	Regional Storm

- Legend**
- Culvert
 - Storm Sewer Inlet
 - Storm Sewer/SWM Pond Outlet
 - Flow Nodes
 - Storm Sewer
 - Watercourse
 - Subwatershed Boundary
 - Stormwater Management Pond
 - Drainage Catchments/UMA

Basemapping from Ontario Ministry of Natural Resources, City of Vaughan and Toronto & Region Conservation Authority
 Orthophotography: 1999 and 2007

UTM Zone 17N, NAD 83

©2009 AECOM Canada Ltd. All Rights Reserved.
 This document is protected by copyright law and may not be used, reproduced or modified in any manner or for any purpose except with the written permission of AECOM Canada Ltd. ("AECOM") or a party to which its copyright has been assigned. AECOM accepts no responsibility, and denies any liability whatsoever, to any party that uses, reproduces, modifies, or relies on this document without AECOM's express written consent.

Black Creek Stormwater Optimization Study Master Plan Class Environmental Assessment
Hydrology & Hydraulics
 May 2011
 Project 60143860
Figure 3

